

LENS

GLOBAL HEALTH INSTITUTE E-NEWSLETTER
Vol 1 – Issue 3 – November 2017



THROUGH THE LENS

- GLOBAL HEALTH IN THE ARTS
- GHI HIGHLIGHTS
- GHI PROGRAMS
- GHI ACADEMY
- EXPERT IN THE LENS
- GHI WELCOMES NEW STAFF
- GLOBAL HEALTH IN WORDS
- ABOUT GHI

MESSAGE FROM THE FOUNDING DIRECTOR

Dear LENS readers,

GHI is pleased to share with you our latest news and updates in this LENS issue. The main theme of the issue revolves around nutrition, obesity and related diseases, a focus of one of our flagship programs.

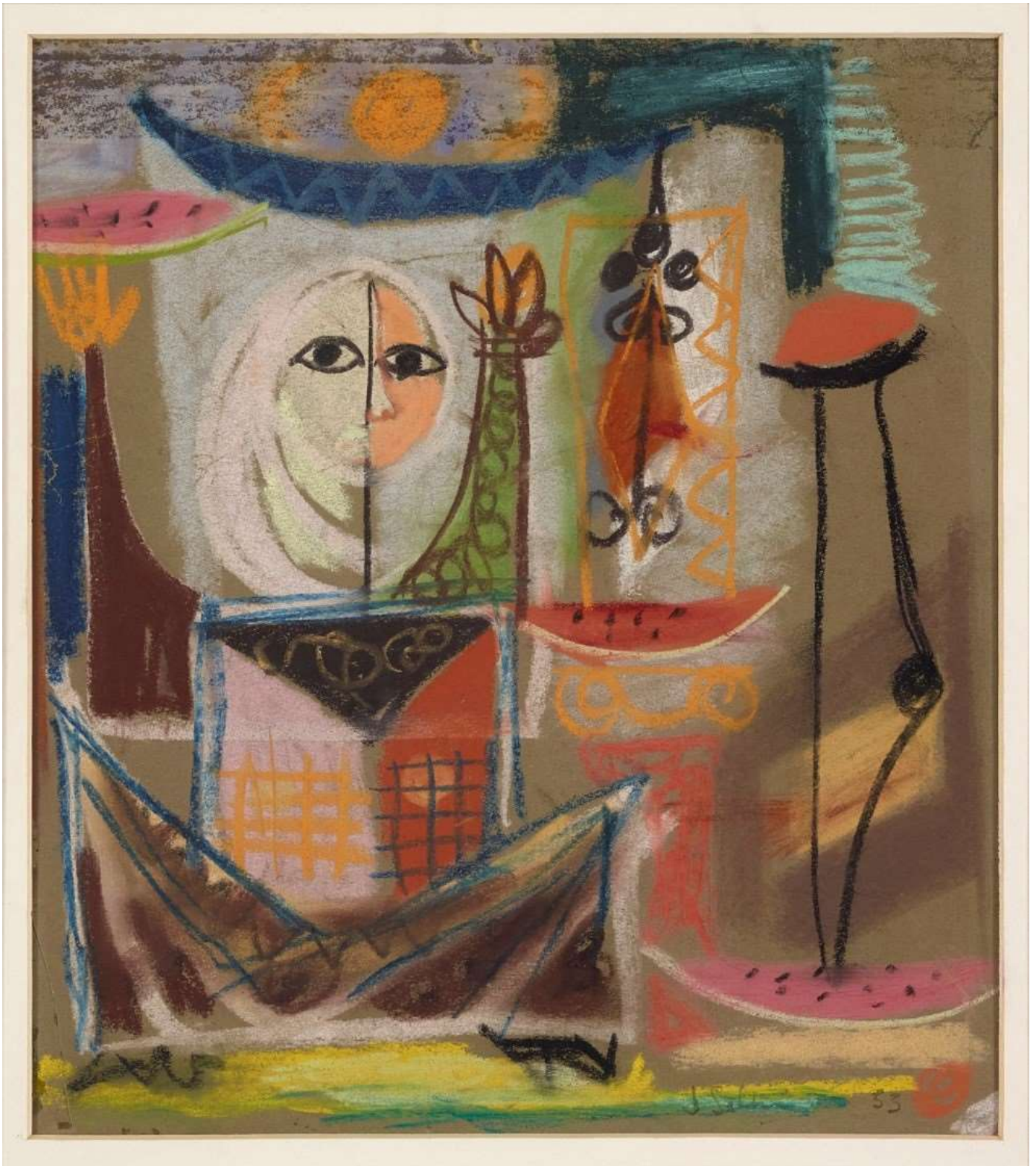
Fall 2017 witnessed several key activities undertaken by the Nutrition, Obesity and Related Diseases (NORD) program aimed at raising awareness around the role of nutrition and physical activity in preventing obesity and other diet-related diseases. GHI engaged with national and global partners during these events, culminating in the “Preventing Obesity in the Middle East and North Africa Region” symposium on October 11th . More than 150 participants from various disciplinary backgrounds participated in the symposium which was held on World Obesity Day.

A key milestone event for GHI occurred during this quarter. GHI Academy, the capacity building arm of the Global Health Institute, was formally launched on November 9, 2017. The launching ceremony of the academy took place during a three-day inaugural workshop on Global Health Diplomacy organized in partnership with the Graduate Institute of the Geneva Global Health Centre.

I hope you enjoy reading this issue of the LENS and look forward to your engagement.

Shadi Saleh

GLOBAL HEALTH IN THE ARTS



Jawad Selim (1919-1961) is the founder of modern art in Iraq. The theme of motherhood symbolizing fertility in ancient Iraq, one of the earliest agricultural civilizations in history, is strongly evoked in the artist's work, reflecting his deep connections to his cultural roots. Portrait of an Iraqi Woman, 1953, Pastel on Paper (Courtesy of Ramzi and Saeda Dalloul Arab Art Foundation)

GHI HIGHLIGHTS

GHI LAUNCHES GHI ACADEMY DURING INAUGURAL WORKSHOP ON GLOBAL HEALTH DIPLOMACY

November 2017 | Beirut, Lebanon

The 9th of November 2017 marked the official launching of the GHI Academy through an inaugural workshop on Global Health Diplomacy



organized in partnership with the Graduate Institute of Geneva Global Health Centre.

During the launching ceremony, Dr. Shadi Saleh, Founding Director of the AUB GHI, highlighted the strategic role envisioned for the GHI Academy as a smart learning hub for capacity building in global health. EVP/Dean Mohamad H. Sayegh emphasized on the importance of GHI as an integral component of AUB's new vision on health, HEALTH 2025. Her Excellency Emmanuelle Lamoureux, Ambassador of Canada to Lebanon, described the current global health diplomacy challenges for Lebanon and the region during her keynote speech.

[Read More](#)

GHI FOUNDING DIRECTOR JOINS CUGH BOARD OF DIRECTORS

October 2017 | Washington DC, USA

Peer member institutions at the Consortium of Universities for Global Health (CUGH) have recently elected GHI Founding Director, Dr. Shadi Saleh, to serve on CUGH board of directors for a three-year term, marking the first MENA representation on the board.

CUGH involves more than 150 institutions from around the world with units focusing on global health. Since April 2017, GHI has also been on the CUGH Research Committee contributing to the committee's work and participating in their monthly conference meetings.

[Read More](#)



GHI HOLDS FIRST ANNUAL RETREAT

October 2017 | Beit Merry, Lebanon



The first annual Global Health Institute retreat took place on 9 October in picturesque Beit Merry, a few hundred meters above the hustle and bustle of Beirut.

The day-long meeting was attended by the GHI founding director, programs co-directors, and team. Ms. Noha Hachach, Director of Health Strategy, discussed the learning and assessment framework and the communication strategy for global impact at GHI.

IDRC MENA Regional Director, Mrs. Kathryn Reynolds, joined the meeting in the afternoon session as the team discussed accomplishments over the past year as well as strategies and synergies moving forward.

GHI PROGRAMS

CONFLICT MEDICINE PROGRAM CMP

CMP PLANS "MDR & WAR WOUNDS" PROJECT WITH INTERNATIONAL PARTNERS IN BEIRUT

November 2017 | Beirut, Lebanon

The Conflict Medicine Program organized a workshop to set the framework for a project on the emerging threat of multidrug resistant *Acinetobacter baumannii* (MDRab) in war wounds.

Experts in epidemiology, microbiology, history and anthropology of war came together from the USA, UK, Brussels, Switzerland, Italy, Iraq, Yemen, and Lebanon to share their knowledge and expertise in developing the project. This activity constitutes the groundwork for the ongoing discussions on MDRab that followed the February 2017 Paris meetings for the same

group. The project is a collaboration with King's College London.



CMP CO-DIRECTORS SPEAK DURING MSF REGIONAL DIRECTORS MEETING

October 2017 | Beirut, Lebanon

REFUGEE HEALTH PROGRAM RHP

RHP CO-DIRECTOR DISCUSSES CHILDREN ON THE MOVE DURING ISSOP MEETING

September 2017 | Budapest, Hungary

**MEDECINS SANS FRONTIERES
DOCTORS WITHOUT BORDERS**

As an invited speaker to the annual meeting of the International Society of Social Pediatrics and Child Health (ISSOP) in Budapest, Dr. Abu Sitta discussed the challenges facing the humanitarian sector in contemporary armed conflicts.

Dr. Fouad Fouad attended the International Society of Social Pediatrics and Child Health (ISSOP) annual meeting in Budapest, Hungary.

As the main speaker with a panel of international experts on *children on the move*, Dr. Fouad discussed how pediatricians and child health providers, pediatric societies and national and international organizations could collaborate to improve the health and well-being of displaced children in terms of program and systems development, clinical care, and policy generation.



[Read More](#)

NUTRITION OBESITY & RELATED DISEASES NORD

NORD PROMOTES COMMUNITY HEALTH DURING SAIDA HEALTH DAY

September 2017 | Saida, Lebanon



NORD took part in Saida Health Day on 24 September, an event organized by AUB-based non-governmental organization "Amalouna" in partnership with GHI and multiple centers at the university as well as the Hariri Foundation.

The health day was held in Khan El Franj, a touristic site renowned for its strategic location at the heart of Saida's old souks which also serves as a focal area to disadvantaged residents. The NORD team conducted nutrition assessments and educational activities targeting more than 1,000 visitors of different age groups and socio-economic statuses.

[Read More](#)

MONTH LONG HEALTH PROMOTION ACTIVITIES CULMINATE IN SYMPOSIUM ON WORLD

OBESITY DAY

September/October 2017 | Saida, Lebanon

NORD organized a series of outreach activities and events to raise awareness on the role of nutrition and physical activity in preventing obesity and diet-related diseases in the Middle East and North Africa region. By collaborating with “Follow the Women”, “Amalouna”, “Beirut by Bike”, “AUB Wellness Program”, and “Makhzoumi Foundation”, NORD engaged the local community with health promotion and nutrition education activities which culminated in a Symposium in recognition of World Obesity Day on October 11.

[Read More](#)**NORD PARTNERS WITH NATIONAL AND GLOBAL ORGANIZATIONS FOR HEALTH AND WOMEN EMPOWERMENT**

September 2017 | Beirut, Lebanon



Pedal for Peace is the latest initiative established by Follow the Women, an international organization comprised of more than 500 women from 40 different countries who support peace in the Middle East. This initiative promotes women empowerment, peace, and health as a global diplomacy tool.

GHI hosted a press conference at AUB on September 29, 2017 to launch the event. Joining the founding director of GHI, Dr. Shadi Saleh, was President of the Makhzoumki Foundation Fouad Makhzoumi, Founder of UK-based charity Follow the Women Detta Regan, President of the Chamber of Commerce in Tripoli and North Lebanon Toufic Dabboussi, and Founder of Beirut by Bike Jawad Sbeity.

[Read More](#)**GHI ACADEMY****GHI ACADEMY BUILDS CAPACITY IN GLOBAL HEALTH DIPLOMACY THROUGH INAUGURAL WORKSHOP**

November 2017 | Beirut, Lebanon

In collaboration with the Graduate Institute of Geneva Global Health Centre, GHI Academy held an inaugural workshop on Global Health Diplomacy on November 8-10, 2017.

The workshop was attended by around forty-two participants from different countries and with different professional backgrounds representing various health sectors including ministries, non-governmental organizations, international humanitarian aid organizations, educational organizations, and the private sector.

The workshop, which adopted a highly participatory approach, drew on the professional experiences of 13 regional and international facilitators and speakers. It focused on the interface of foreign policy and health, and trained participants on skills needed to negotiate with various regional and international stakeholders, and cross-border solutions for emerging health needs.

[Read More](#)

GHI INKS PARTNERSHIP AGREEMENT WITH THE HUMANITARIAN LEADERSHIP ACADEMY

November 2017 | Beirut, Lebanon



GHI and the Humanitarian Leadership Academy (HLA) signed a partnership agreement that aims to generate relevant contextualized and 'arabized' e-learning opportunities, knowledge products and tools that aid humanitarian learning delivery.

The signing was held during the launching ceremony of the GHI Academy on 9 November 2017.

[Read More](#)

EXPERTS IN THE LENS

Dr. Nahla Hwalla is Professor of Human Nutrition at AUB and Registered Dietitian with the Academy of Nutrition and Dietetics, USA. A pioneer of dietetics education nationally and regionally, her research responds to global nutritional challenges with focus on obesity, whereby she has published valuable highly-cited research. Recently, she expanded her research to the importance of sustainable diets in tackling the Sustainable Development Goals, and to addressing the association of the escalating food and nutrition insecurity in the country with obesity.

Her leadership extends beyond academia to putting nutrition at the forefront of the national agenda in Lebanon. She has provided Lebanon and FAO with the 1st and 2nd Country Profiles on Nutrition, and established the 1st NGO for nutritionists in Lebanon and the region, the Lebanese Academy for Nutrition and Dietetics (LAND). She was appointed by the Director General of WHO to serve on the Expert Advisory Panel on Nutrition. Recently, she spearheaded the Food Security Program at AUB, building capacity nationally and internationally. Hwalla is the recipient of the 2012 Distinguished Researcher Award by the Lebanese National Council for Scientific Research, the 2014 Susan Bulkely Butler Leadership Excellence Award by the International Breast Cancer and Nutrition group at Purdue University, USA, and the 2016 Researcher Pioneer Award by the Lebanese parliament.

CORE EXPERT PROFILE

-
NAHLA HWALLA,
PhD, RD, FAND
NORD Co-Director



GHI WELCOMES NEW STAFF

MARIA EL KOUSSA, MPH *NORD COORDINATOR*

Maria joined GHI as the Coordinator of the Nutrition, Obesity and Related Diseases Program. In this capacity, she initiates and coordinates all program activities in terms of research, capacity building, and outreach by working closely with the Programs and Initiatives Officer. In addition, Maria coordinates and oversees the research on special projects at the Global Health Institute and ensures effective management and delivery of project deliverables.

Maria received her Master in Public Health with a concentration in Nutrition from the College of Global Public Health at New York University in 2014 and her Bachelors of Science in Nutrition and Dietetics with High Distinction from AUB in 2012. Previously, Maria has worked at the Global Health Department in the T.H. Chan School of Public Health at Harvard University.



MELISSA EL HAMOUCH, MPH *RESEARCH ASSISTANT*

Melissa earned her Bachelor of Science in Environmental Health from the American University of Beirut and a Master in Public Health with a concentration in Environmental Health with honors from the French School of Public Health (EHESP) in Paris, France.

Before joining GHI, Melissa worked with Women and Health Alliance International where she contributed to the field work with the refugee population in Chios, Greece.



GLOBAL HEALTH IN WORDS

"There is simply no justification for chronic diseases to continue to take millions of lives prematurely each year when the understanding of how to prevent these deaths is available now. We must stop the global epidemic of chronic disease."

*Dr. Joanne Epping-Jordan
Senior Programme Adviser Chronic Diseases and Health Promotion
World Health Organization*

ABOUT GHI

The Global Health Institute at the American University of Beirut is part of AUB's new vision on health, HEALTH 2025. GHI is the first such freestanding institute in the Middle East and North Africa region, and one of the very few in the Global South

MISSION

The Global Health Institute at AUB addresses global health challenges with a focus on context and sustainable impact by employing an interdisciplinary approach. The primary focus of GHI are challenges that are affecting the MENA region, but have relevance to and impact on other regions in the Global South

VISION

GHI is the regional leader and a key partner in defining and addressing the global health agenda, especially components relevant to the MENA region and other regions in the Global South. GHI will transform the global health dialogue to focus on contextualized solutions that are sustainable and proportionally dependent on local and regional capacity

CONTACT US

Global Health Institute
American University of Beirut
Old Pharmacy Building

PO Box 11-0236 | Riad El-Solh | Zip Code 1107 2020 | Beirut, Lebanon Tel: +961-1-350000 | ext. 4832 | ghi@aub.edu.lb
© 2017 American University of Beirut. All Rights Reserved